

"DOROT"- FLUSHGAL BACKWASH CONTROL VALVE

63-MODEL Size 4"*4" ANGLE

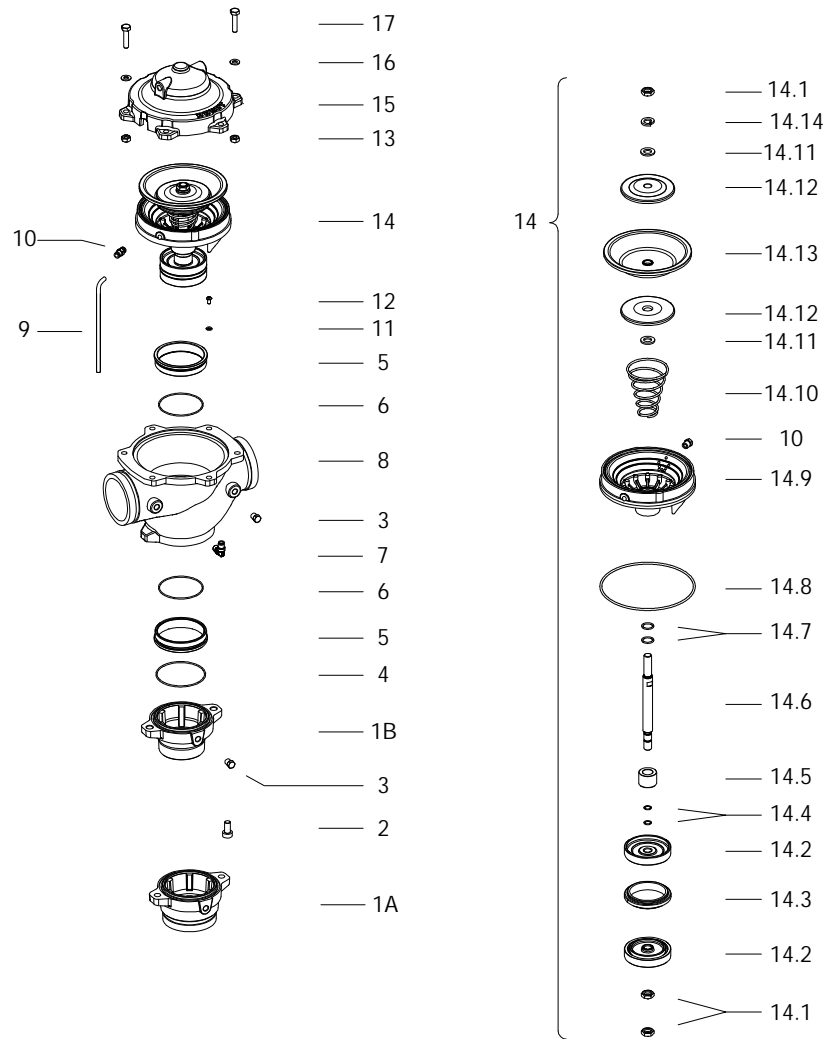
ARKAL Cat. no.: 5060 3414 (BLUE COLOR)

ARKAL Cat. no.: 5060 3414R (RED COLOR)

63-MODEL Size 4"*3" ANGLE

ARKAL Cat. no.: 5060 3413 (BLUE COLOR)

ARKAL Cat. no.: 5060 3413R (RED COLOR)



PARTS LIST

No:	ARKAL Cat. No:	PARTS DESCRIPTION	MATERIALS
1A	5060 3414 01A	4" ADAPTOR (BLUE COLOR)	C.I
1A	5060 3414R 01A	4" ADAPTOR (RED COLOR)	C.I
1B	5060 3413 01B	3" ADAPTOR (BLUE COLOR)	C.I
1B	5060 3413R 01B	3" ADAPTOR (RED COLOR)	C.I
2	5060 3414 02	BOLT	SS
3	5060 0005	PLUG	P.A.
4	5060 3414 04	"O"-RING 2-248	NBR
5	5060 3414 05	SEAT	S.S.
6	5060 3414 06	"O"-RING 9-587	NBR
7	5067 0084	ANGLE 8mm*1/4"	
8	5060 3414 10	BODY (BLUE COLOR)	C.I
8	5060 3414R 10	BODY (RED COLOR)	C.I
9	5050 0181	CONTROL PIPE	
10	5067 0165	CONNECTOR 8mm*1/4"	
11	5060 3414 11	WASHER	S.S.
12	5060 3414 12	BTNHD SCREW	S.S
13	5060 3414 13	NUT	S.S
14	5060 3414 14	ASSEMBLY	
14.1	5060 3414 141	NUT	S.S
14.2	5060 3414 142	SEAL DISK	BRASS
14.3	5060 3414 143	SEAL	N.R
14.4	5060 3414 144	"O"-RING 2-014	NBR
14.5	5060 3414 145	STOPPER	BRASS
14.6	5060 3414 146	SHAFT	S.S
14.7	5060 3414 147	"O"-RING 2-117	NBR
14.8	5060 3414 148	"O"-RING 2-264	NBR
14.9	5060 3414 149	BOTTON CHAMBER	R.P.A.*
14.10	5060 3414 1410	SPRING	S.S
14.11	5060 3414 1411	WASHER	S.S
14.12	5060 3414 1412	DISC	PDM
14.13	5060 3414 1413	DIAPHRAGM	N.R
14.14	5060 3414 1414	SPRING WASHER	S.S
15	5060 3414 15	BONNET (BLUE COLOR)	C.I.
15	5060 3414R 15	BONNET (RED COLOR)	C.I.
16	5060 3414 16	WASHER	S.S
17	5060 3414 17	BOLT	S.S

*- OPTIONAL (WITH PRESSURE UPPER 10bar)

MATERIALS:

C.I. -CAST-IRON

N.R. -NITRILE RUBBER

S.S. -STAINLESS STEEL

P.A. -POLYAMIDE

NBR-NITRILE RUBBER

R.P.A. -REINFORCED POLYAMIDE