

# FLEXNET™ AND FLEXNET™ HP BARB CONNECTOR



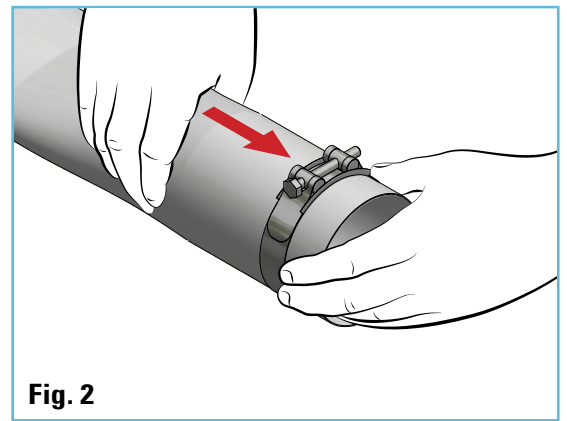
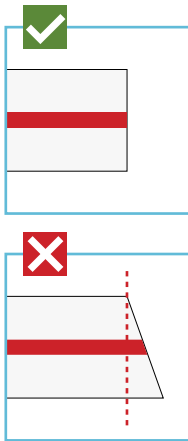
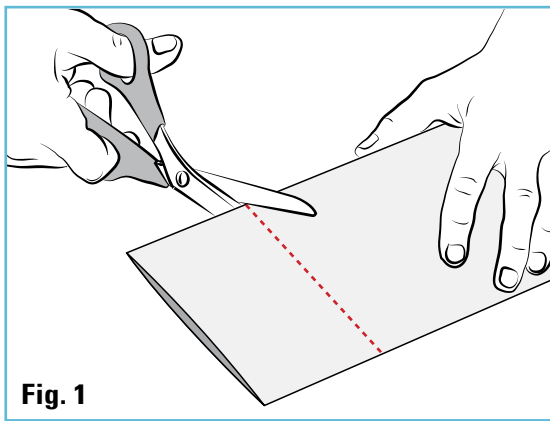
## ASSEMBLY INSTRUCTIONS

### Connecting a barb connector. Size 2"; 3"; 4"

1. Strictly ensure the pipe is **cut perfectly straight** during the cutting operation (**Fig. 1**).

When reconnecting a pipe to the connector, cut at least 1.5 cm (5/8") off the pipe end.

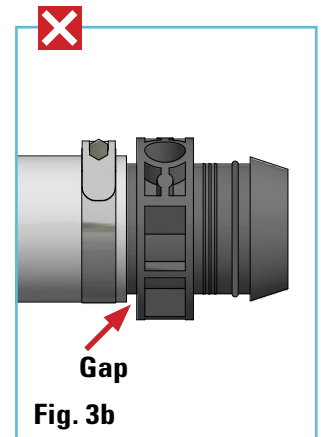
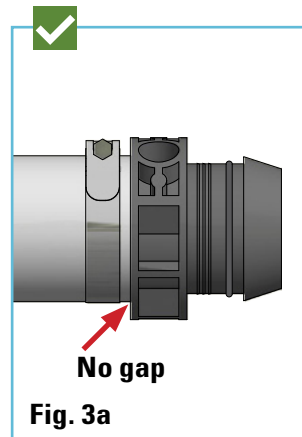
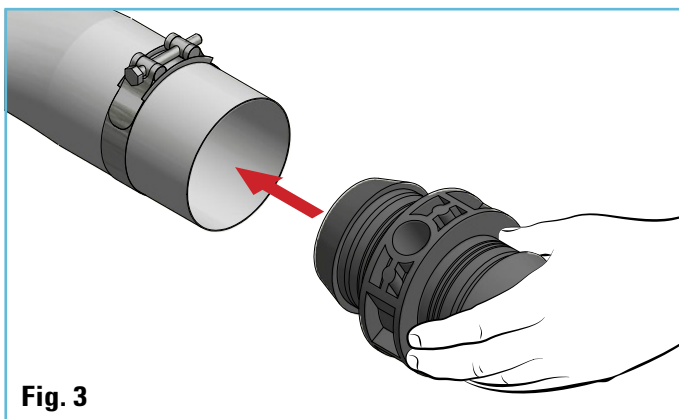
2. Insert the metal clamp onto the pipe (**Fig. 2**).



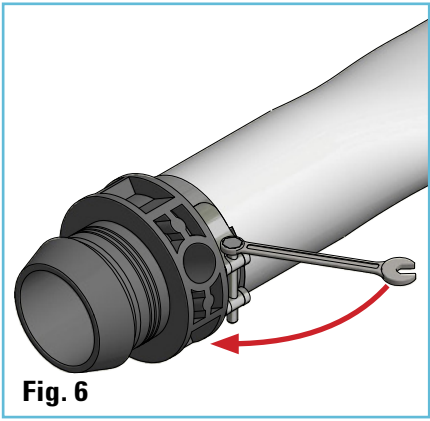
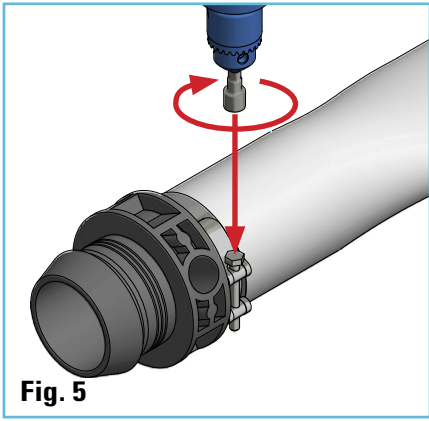
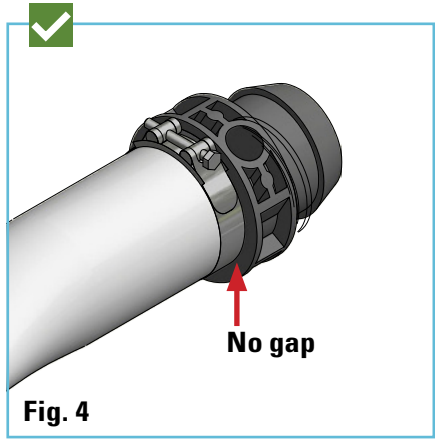
3. Make sure that the pipe inside surface is wet, so it will not stick to the rubber seal in the connector, and move it from its groove.

4. Make sure that the pipe is **inserted all the way** to the connector's shoulder (**Fig. 3a**).

5. Make sure there is **no gap** between the metal clamp and the connector's shoulder (**Fig. 3, 3a and 3b**).



**6. Tighten forcefully (Fig. 6).**



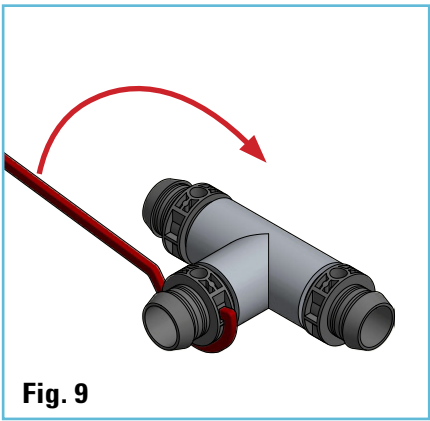
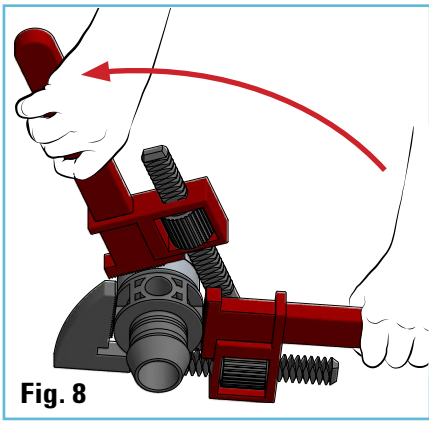
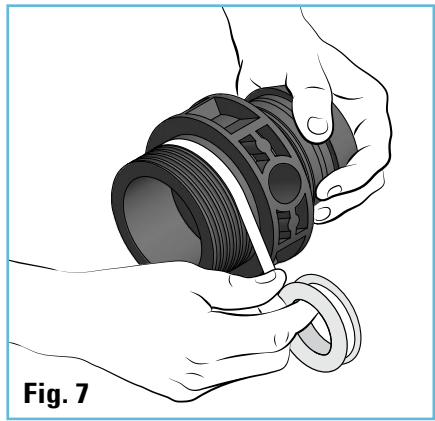
## Connecting to fittings

### Connecting a threaded adaptor

Apply teflon tape on the threads for sealing (Fig. 7).

Use a suitable key/wrench to tighten the thread (Fig. 8 and 9).

**Key sizes** ■ 2" Key size: 16-40 mm ■ 3" and 4" Key size: 40-75 mm

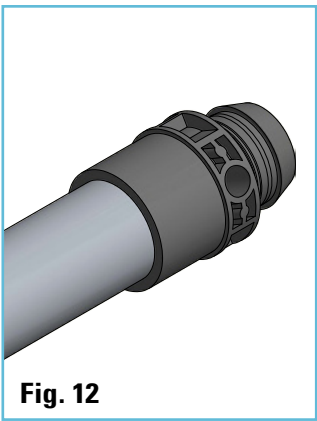
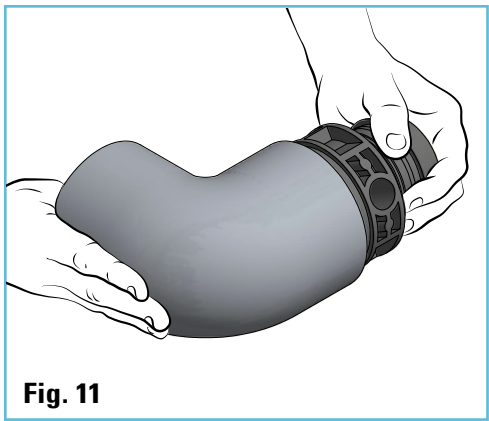
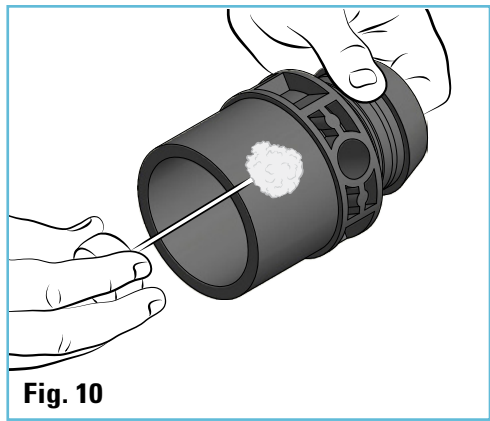


### Connecting a PVC cement adaptor

Glue the adaptor according to the PVC cement manufacturer's instructions. Netafim™ recommends using a cleaning primer to ensure proper welding.

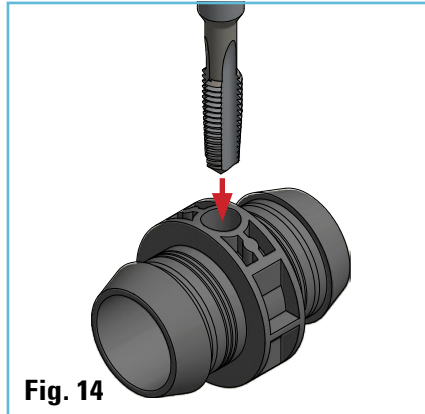
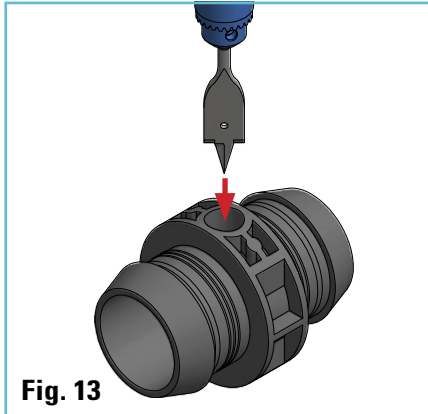
**Sizes of PVC adaptors:**

■ 2" ISO 63/50, ASTM 2"/1.5" ■ 3" - ISO 90/75, ASTM 3"/2.5" ■ 4" - Male ISO 110, ASTM Spigot 4"



## Branching a 1/2" thread

1. Use a 18-19 mm (3/4") drill-bit to drill a hole at the designated place (**Fig. 13**).
2. Use a BSP/NPT 1/2" tap to prepare the thread (**Fig. 14**).
3. Connect the relevant accessory (apply Teflon tape) (**Fig. 15**).  
If needed, retighten under water pressure.



**Netafim Tapping kits: Cat No. 45000-003162 and 45000-003185.**

### Other Possible uses:

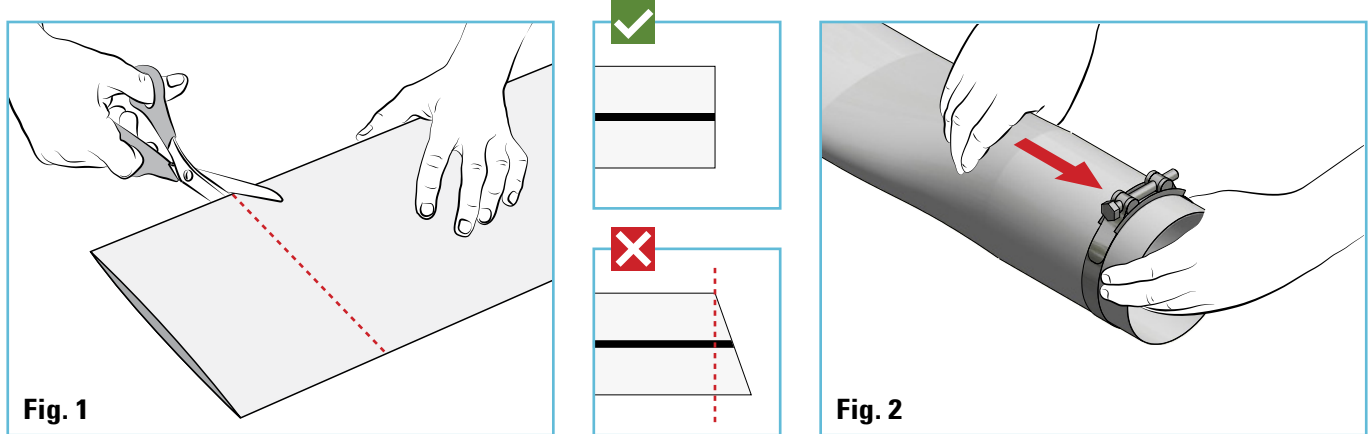
- Branching connector
- Air vent.

# Connecting a barb connector. Size 6"; 8"; 10"; 12"

1. Strictly ensure the pipe is **cut perfectly straight** during the cutting operation.

When reconnecting a pipe to the connector, cut at least 1.5 cm (5/8") off the pipe end.

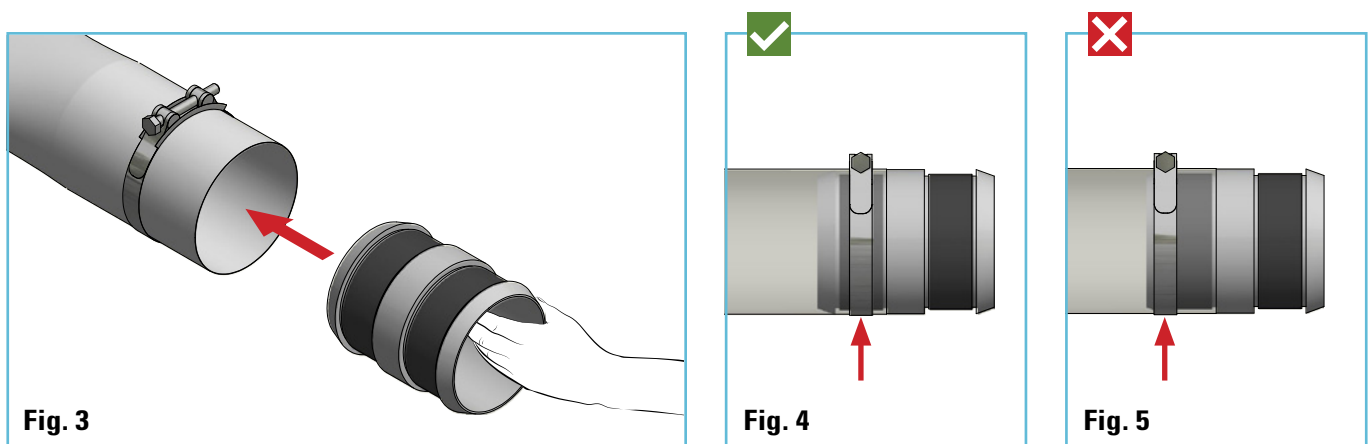
2. Insert the metal clamp onto the pipe.



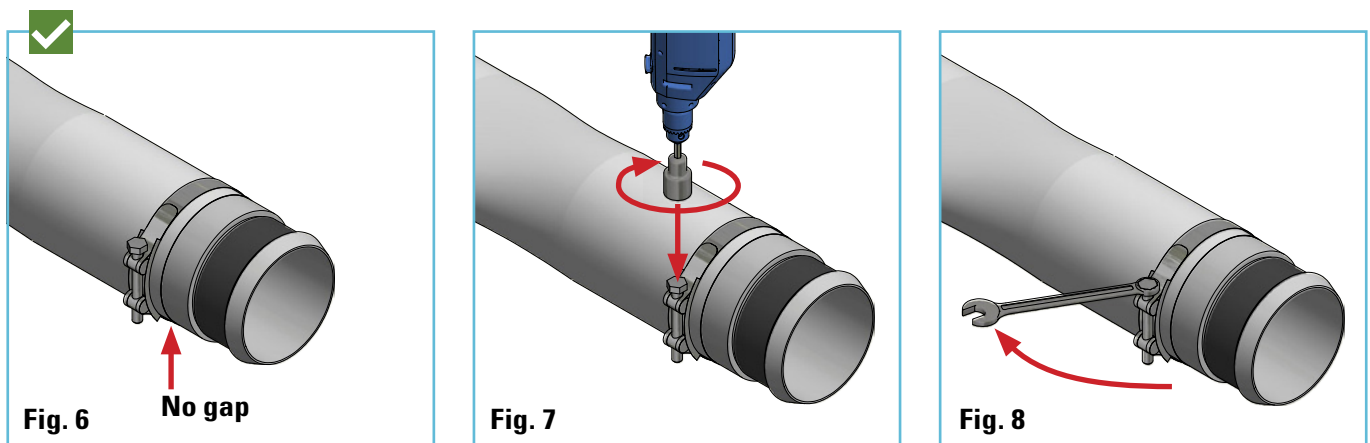
3. Wet the connector and insert it into the pipe.

4. Make sure that the pipe is **inserted all the way** to the connector's shoulder.

5. Make sure that the metal clamp is exactly above the rubber seal (**Fig. 4**).



6. Tighten forcefully (**Fig. 8**).



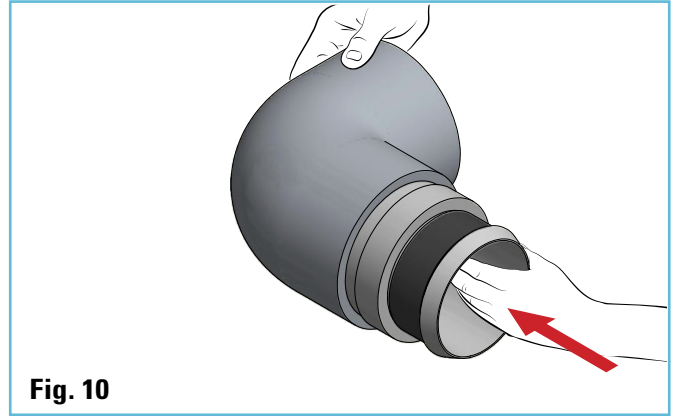
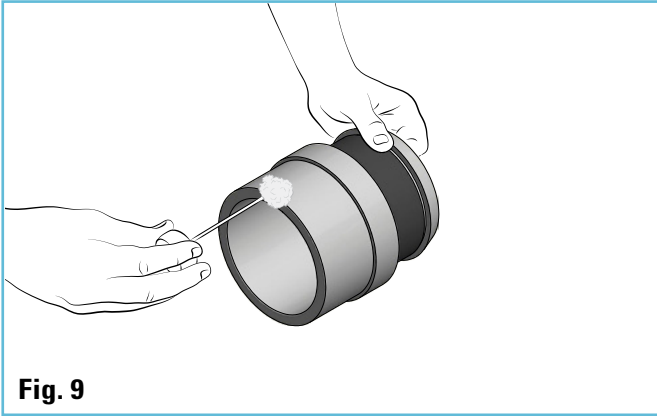
## Connecting to PVC fittings

### Sizes of PVC adaptors:

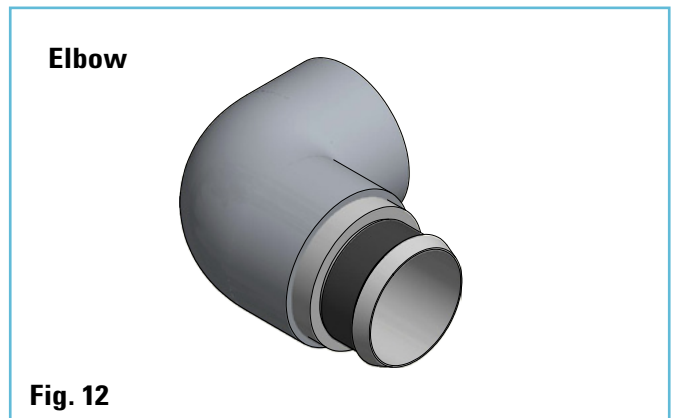
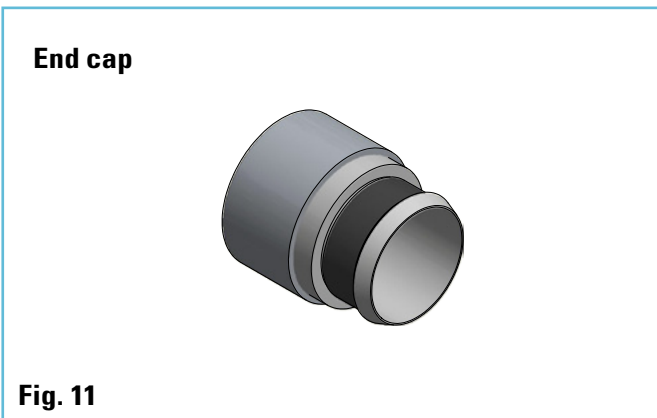
■ ASTM D-2466: 6"; 8"; 10"; 12" ■ ISO 1452: 160 mm; 200 mm; 250 mm; 315 mm.

### Connecting a PVC cement adaptor

Glue the adaptor according to the PVC cement manufacturer's instructions (**Fig. 9 and 10**). Netafim™ recommends using a cleaning primer to ensure proper welding.



### Coupling options



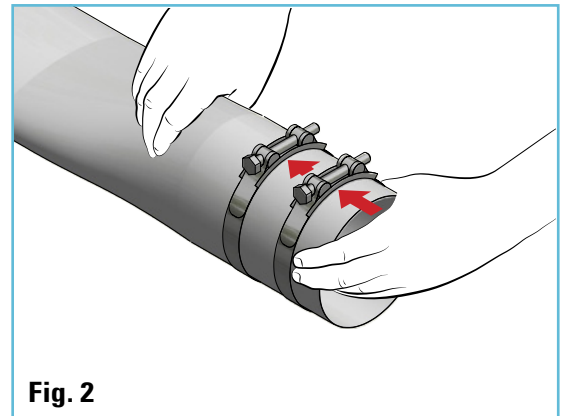
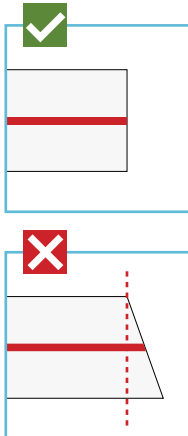
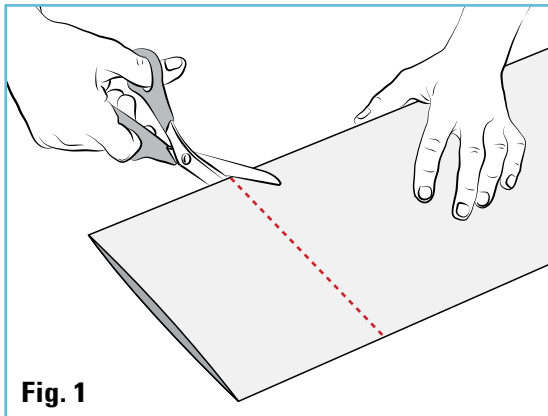
# Connecting a high pressure barb connector

## Size 6"; 8"

1. Strictly ensure the pipe is **cut perfectly straight** during the cutting operation (**Fig. 1**).

When reconnecting a pipe to the connector, cut at least 5.0 cm (2") off the pipe end.

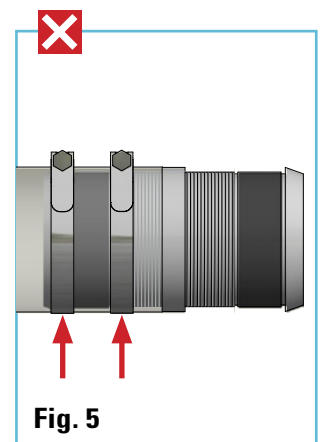
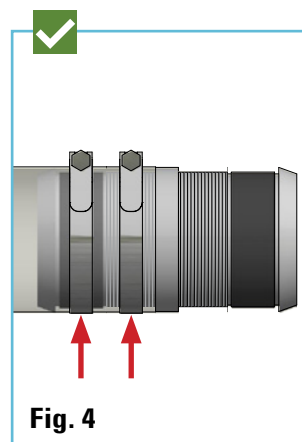
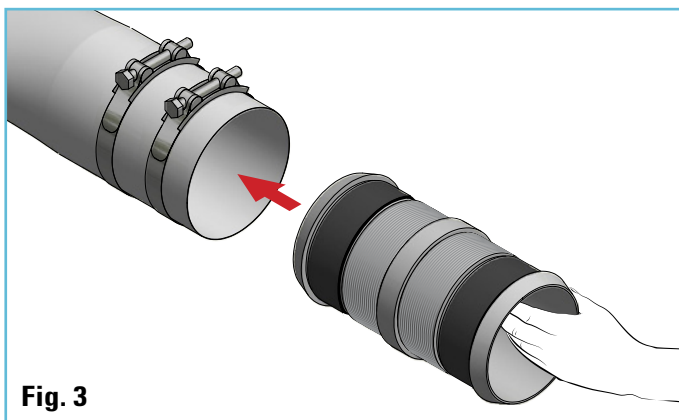
2. Insert the 2 metal clamps onto the pipe (**Fig. 2**).



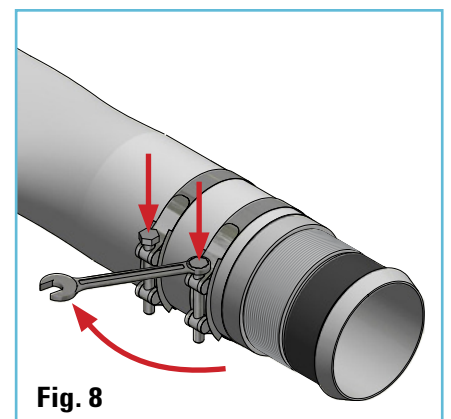
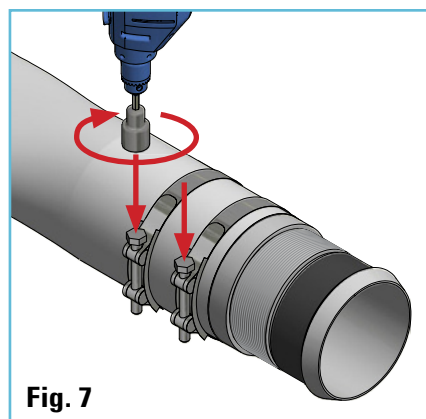
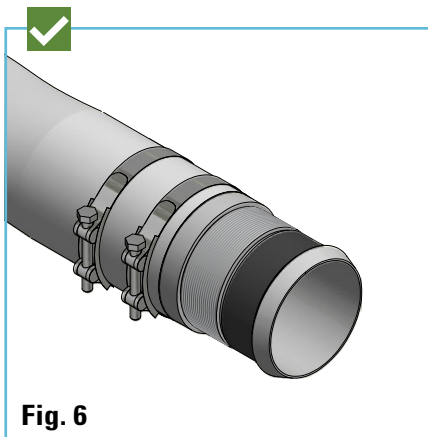
3. Wet the connector and insert it into the pipe.

4. Make sure that the pipe is **inserted all the way** to the connector's shoulder.

5. Make sure that one metal clamp is exactly above the rubber seal and the other exactly above the ribbed rim (**Fig. 4**).



6. **Tighten** both metal clamps **forcefully** (**Fig. 7 and 8**).



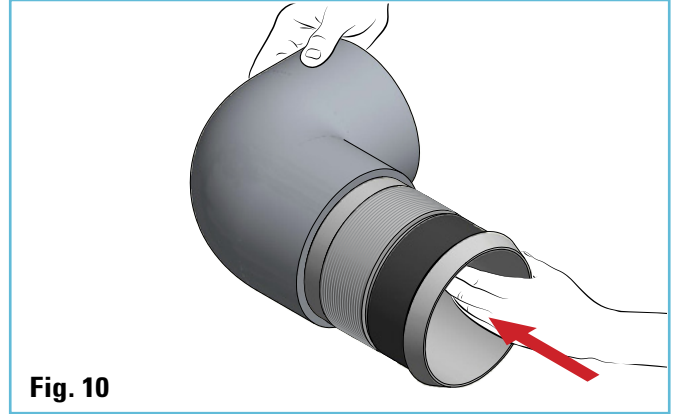
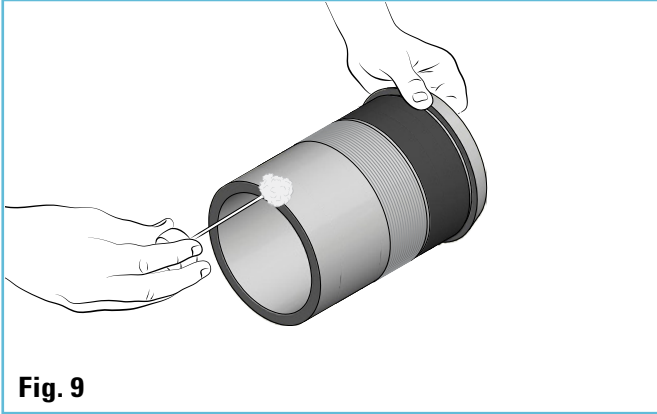
## Connecting to PVC fittings

### Sizes of PVC adaptors:

■ ASTM D-2466: 6"; 8" ■ ISO 1452: 160 mm; 200 mm.

### Connecting a PVC cement adaptor

Glue the adaptor according to the PVC cement manufacturer's instructions (**Fig. 9 and 10**). Netafim™ recommends using a cleaning primer to ensure proper welding.



### Coupling options

