

# 80-V

## 80 SERIEST VALVE



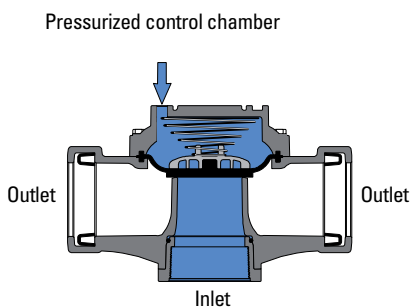
Netafim presents the 80-V, a specially designed plastic valve for agricultural applications, combining high quality, affordability, ease of installation and a durable construction.

### FEATURES

- Designed for Irrigation when one inlet and two outlets are required.
- The 80-V valve includes a unique replaceable connector, which in case of wear and tear, doesn't require to replace the entire valve.
- Unique diaphragm designed allows a steady regulation even at low flow conditions.
- High capacity design with extremely low pressure losses
- Low required operation pressure
- Corrosion resistant high quality materials and light weight
- Simple and reliable
- Wide range of control applications

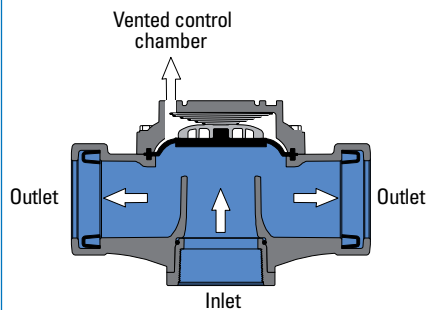
### PRINCIPLE OF OPERATION:

#### CLOSED MODE



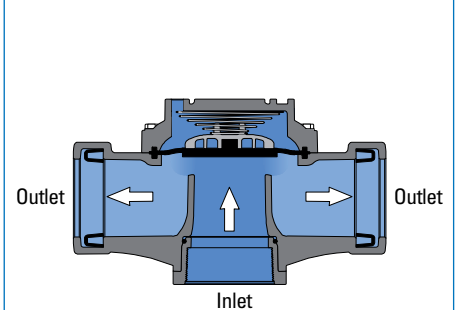
When inlet pressure is applied to the control chamber the valve closes drip-tight.

#### OPEN MODE



When the operating pressure is relieved from the control chamber, the line pressure at the valve inlet opens the valve.

#### MODULATING MODE

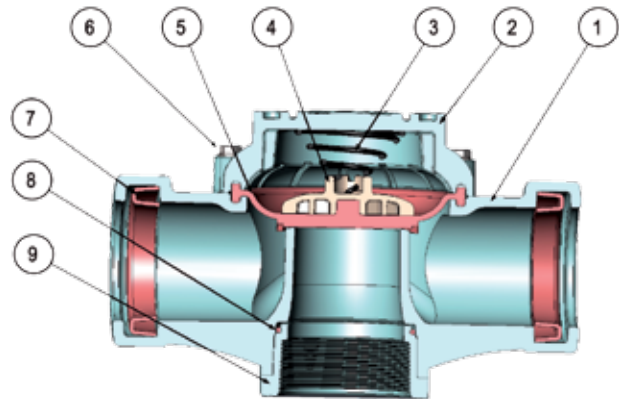


The position of the diaphragm is dictated by the volume of water in the control chamber, which is regulated by the pilot system in order to maintain a preset pressure value.

# 80-V - 80 SERIES T VALVE

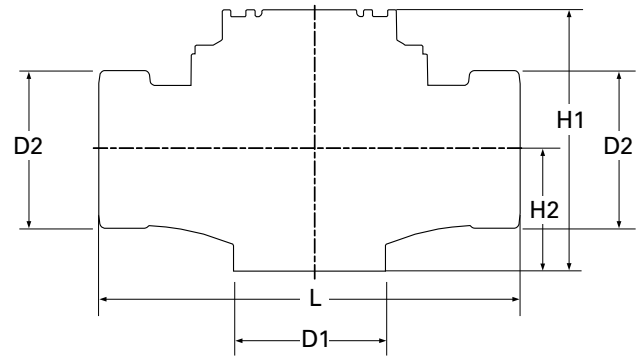
## PARTS AND MATERIALS

PART	DESCRIPTION	MATERIAL
1	Body	GRP
2	Bonnet	GRP
3	Spring	SST 302
4	Spring Seat	GRP
5	Diaphragm	NR
6	Bolts & Nuts	SST 304
7	Seal	NBR
8	O-ring	NBR
9	Replaceable connection	Reinforced-Plastic or Brass



## DIMENSIONS & WEIGHT

DIMENSIONS	METRIC	US
D1 (mm / inch)	75	3
D2 (mm / inch)	75	3
H1 – Height (mm / inch)	193	8
H2 (mm / inch)	76	3
L (mm / inch)	310	12
Weight (kg / lb)	1.6	3.5

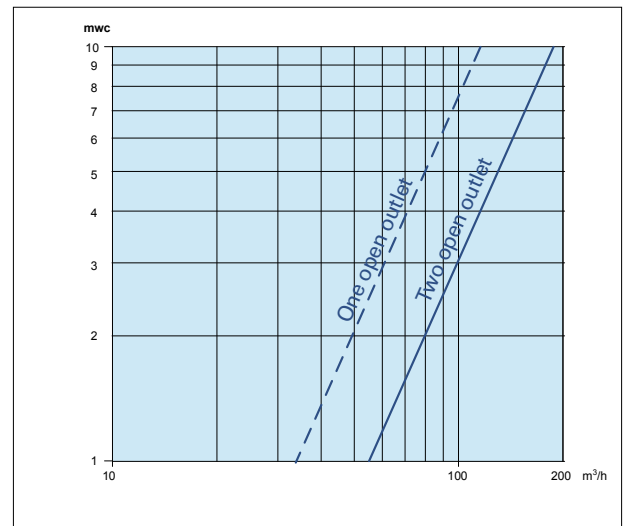


## HYDRAULIC PERFORMANCE

Operating pressure range	bar	0.2 - 10
	psi	3 - 145
Max. recommended flow	m <sup>3</sup> /h	100
	gpm	440
Minimal flow	m <sup>3</sup> /h	<1
	gpm	<5
Kv / Cv – two open outlets	m <sup>3</sup> /h @ 1bar	180
	gpm @ 1psi	792
Kv / Cv – one open outlet	m <sup>3</sup> /h @ 1bar	115
	gpm @ 1psi	506

## HEAD LOSS

FLOW RATE	HEADLOSS			
	TWO OUTLETS		SINGLE OUTLET	
m <sup>3</sup> /h	Bar	Psi	Bar	Psi
25	0.02	0.3	0.05	0.7
50	0.08	1.16	0.19	2.75
75	0.17	2.46	0.43	6.2
100	0.31	4.5	0.76	11



For calculating the loss through the fully open valve, use the following equation:

$$\Delta P = \left( \frac{Q}{Kv} \right)^2$$

Q in m<sup>3</sup>/h

## NETAFIM AUSTRALIA

P: 1300 307 407  
E: [au.net.info@netafim.com](mailto:au.net.info@netafim.com)  
W: [netafim.com.au](http://netafim.com.au)



80V Valve  
80 Series T Valve  
JUNE 2017

