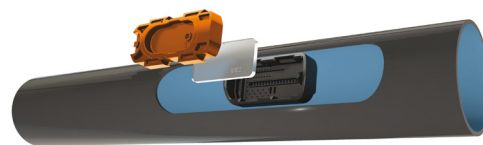




DRIPNET PC™ AS XR

COMPACT INTEGRAL PRESSURE-COMPENSATING,
CONTINUOUSLY SELF-CLEANING, ANTI-SIPHON
MECHANISM DRIPPER WITH IMPROVED
RESISTANCE TO ROOT INTRUSION



12009 - 12010 - 16009 - 16010 - 16012 - 20010 - 20012 - 23009

APPLICATIONS

Sub-surface multi seasonal row crops.

FEATURES AND BENEFITS

- Pressure compensated: Precise and equal amounts of water are delivered over a broad pressure range. 100% uniformity of water and nutrient distribution along the laterals.
- Anti-Siphon mechanism: Prevents contaminants from being drawn into the dripper, which is needed in sub surface applications.
- Crops are protected against root intrusion better than all other options, this is achieved by utilizing patented root inhibitor within the dripper cover that inhibits root intrusion and growth into the dripper labyrinth.
- Continuously self flushing: Continuously flushing debris, throughout operation, not just at the beginning or end of a cycle, ensuring uninterrupted dripper operation This allows reduction in the filtration requirements, and increases filtration efficiency.
- Self-flushing system with wide filtration area improves resistance to clogging.
- TurboNet™ labyrinth assures wide water passages, large deep and wide cross section improves clogging resistance.

SPECIFICATIONS

- Pressure-compensating range: 0.25/ 0.40/ 0.60-2.5/ 3.0/ 3.5 bar (according to flow rate mode).
- Anti-Siphon mechanism.
- Recommended filtration: according to drippers flow rate.
Filtration method is to be selected based on the kind and concentration of the dirt particles existing in the water. Wherever sand exceeding 2 ppm exists in the water, a Hydrocyclone is to be installed before the main filter. When sand/ silt/ clay solids exceed 100 ppm, pre treatment will be applied according to Netafim™ expert team's instructions.
- TurboNet™ labyrinth with large water passage.
- To be "welded" into thick-walled dripperlines (0.90, 1.00, 1.20 mm).
- Injected dripper, very low CV.
- Injected silicon diaphragm.
- High UV resistant. Resistant to standard nutrients used in agricultural.
- DripNet PC™ dripperlines meet ISO 9261 Standards with production certified by the Israel Standards Institute (SII).

DRIPPERS TECHNICAL DATA

FLOW RATE* (L/H.)	WORKING PRESSURE RANGE (BAR)	WATER PASSAGES DIMENSIONS WIDTH-DEPTH-LENGTH (MM)	FILTRATION AREA (MM ²)	CONSTANT K	EXPONENT *	RECOMMENDED FILTRATION (MICRON)/(MESH)
0.6	0.25 - 2.5	0.61 x 0.60 x 8	42	0.6	0	130/120
1.0	0.40 - 3.0	0.76 x 0.73 x 8	42	1.0	0	130/120
1.6	0.40 - 3.0	0.84 x 0.80 x 8	42	1.6	0	200/80
2.0	0.40 - 3.5	1.02 x 0.88 x 8	42	2.0	0	200/80
3.0	0.40 - 3.5	1.02 x 0.88 x 8	42	3.0	0	200/80
3.8	0.60 - 3.5	1.02 x 0.88 x 8	42	3.8	0	200/80

* Within working pressure range

DRIPPERLINES TECHNICAL DATA

MODEL	INSIDE DIAMETER (MM)	WALL THICKNESS (MM)	OUTSIDE DIAMETER (MM)	MAX. WORKING PRESSURE (BAR)	MAXIMUM FLUSHING PRESSURE (BAR)	KD
12009	10.6	0.9	12.4	2.5/3.0/3.5	3.9	2.85
12010	10.6	1.0	12.6		4.6	2.85
16009	14.2	0.9	16.0		3.9	0.72
16010	14.2	1.0	16.2		4.6	0.72
16012	14.2	1.2	16.6		5.2	0.72
20010	17.5	1.0	19.5		4.6	0.25
20012	17.5	1.2	19.9		5.2	0.25
23009	20.8	0.9	22.6		3.5	0.20

*Maximum working pressure is defined by the dripper and not by the dripperline wall thickness

DRIPPERLINES PACKAGE DATA (ON BUNDLED COILS)

MODEL	WALL THICKNESS (MM)	COIL LENGTH (M)	DISTANCE BETWEEN DRIPPERS (M)	AVERAGE* COIL WEIGHT (KG)	COILS IN A 40 FEET CONTAINER (UNITS)	TOTAL IN A 40 FEET CONTAINER (M)
12009	0.9	500	0.15 to 1.00	16.5	384	192000
12010	1.0	500	0.15 to 1.00	18.3	384	192000
16009	0.9	500	0.15 to 1.00	18.5	330	165000
16010	1.0	500	0.15 to 1.00	20.4	330	165000
16012	1.2	400	0.15 to 1.00	19.2	352	140800
20010	1.0	300	0.15 to 1.00	16.3	330	99000
20012	1.2	300	0.15 to 1.00	19.5	330	99000
23009**	0.9	350	0.15 to 0.20	22.5	480	168000
		400	0.25 to 1.00	25.0		192000

* According to drippers spacing

** Package only on carton/plastic coils