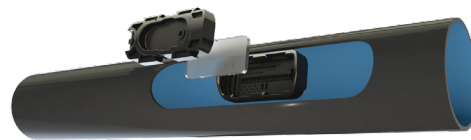




## DRIPNET PC™ HWD

COMPACT INTEGRAL PRESSURE-COMPENSATING,  
CONTINUOUSLY SELF-CLEANING DRIPPER



12009 - 12010 - 16009 - 16010 - 16012 - 20010 - 20012 - 23009

### TECHNICAL INFORMATION

- Pressure-compensating range: 0.25/ 0.40/ 0.60-2.5/ 3.0/ 3.5 bar (according to flow rate model).
- Recommended filtration: according to drippers flow rate.  
Filtration method is to be selected based on the kind and concentration of the dirt particles existing in the water.  
Wherever sand exceeding 2 ppm exists in the water, a Hydrocyclone is to be installed before the main filter.  
When sand/ silt/ clay solids exceed 100 ppm, pre treatment will be applied according to Netafim™ expert team's instructions.
- TurboNet™ labyrinth with large water passage.
- To be "welded" into thick-walled dripperlines (0.90, 1.00, 1.20 mm).
- Injected dripper, very low CV.
- Injected silicon diaphragm.
- High UV resistant. Resistant to standard nutrients used in agricultural.
- DripNet PC™ dripperlines meet ISO 9261 Standards with production certified by the Israel Standards Institute (SII).

## DRIPPERS TECHNICAL DATA

FLOW RATE* (L/H)	WORKING PRESSURE RANGE (BAR)	WATER PASSAGES DIMENSIONS WIDTH-DEPTH-LENGTH (MM)	FILTRATION AREA (MM <sup>2</sup> )	CONSTANT K	EXPONENT* X	RECOMMENDED FILTRATION (MICRON)/(MESH)
0.4	0.25 - 2.5	0.52 x 0.60 x 22	29	0.4	0	130/120
0.6	0.25 - 2.5	0.61 x 0.60 x 8	39	0.6	0	130/120
1.0	0.40 - 3.0	0.76 x 0.73 x 8	39	1.0	0	130/120
1.6	0.40 - 3.0	0.84 x 0.80 x 8	39	1.6	0	200/80
2.0	0.40 - 3.5	1.02 x 0.88 x 8	39	2.0	0	200/80
3.0	0.40 - 3.5	1.02 x 0.88 x 8	39	3.0	0	200/80
3.8	0.60 - 3.5	1.02 x 0.88 x 8	39	3.8	0	200/80

\* Within working pressure range

## DRIPPERLINES TECHNICAL DATA

MODEL	INSIDE DIAMETER (MM)	WALL THICKNESS (MM)	OUTSIDE DIAMETER (MM)	MAX. WORKING PRESSURE (BAR)	MAXIMUM FLUSHING PRESSURE (BAR)	KD
12009	10.6	0.9	12.4	2.5/3.0/3.5	3.9	2.85
12010	10.6	1.0	12.6		4.6	2.85
16009	14.2	0.9	16.0		3.9	0.72
16010	14.2	1.0	16.2		4.6	0.72
16012	14.2	1.2	16.6		5.2	0.72
20010	17.5	1.0	19.5		4.6	0.25
20012	17.5	1.2	19.9		5.2	0.25
23009	20.8	0.9	22.6		3.5	0.20

\*Maximum working pressure is defined by the dripper and not by the dripperline wall thickness

## DRIPPERLINES PACKAGE DATA (ON BUNDLED COILS)

MODEL	WALL THICKNESS (MM)	COIL LENGTH (M)	DISTANCE BETWEEN DRIPPERS (M)	AVERAGE* COIL WEIGHT (KG)	COILS IN A 40 FEET CONTAINER (UNITS)	TOTAL IN A 40 FEET CONTAINER (M)
12009	0.9	500	0.15 to 1.00	16.5	384	192000
12010	1.0	500	0.15 to 1.00	18.3	384	192000
16009	0.9	500	0.15 to 1.00	18.5	330	165000
16010	1.0	500	0.15 to 1.00	20.4	330	165000
16012	1.2	400	0.15 to 1.00	19.2	352	140800
20010	1.0	300	0.15 to 1.00	16.3	330	99000
20012	1.2	300	0.15 to 1.00	19.5	330	99000
23009**	0.9	350	0.15 to 0.20	22.5	480	168000
		400	0.25 to 1.00	25.0		192000

\* According to drippers spacing

\*\* Package only on carton/plastic coils

## MAX. LATERAL LENGTH (METER) AT DIFFERENT INLET PRESSURE AND DIFFERENT SLOPES

DRIPNET PC™ AS 12009/12010 • ID 10.6 MM • KD 2.85 • FLOW RATE 0.4 L/H

	DISTANCE BETWEEN DRIPPERS (METER)									
	INLET PRESSURE (BAR)	0.2	0.3	0.4	0.5	0.6	0.7	0.8	0.9	1.0
UPHILL 2%	1.0	70	98	121	141	158	174	186	197	207
	1.5	89	126	158	188	214	237	258	277	295
	2.0	103	146	185	221	253	282	310	335	358
	2.5	113	162	206	247	284	318	350	380	407
FLAT TERRAIN	1.0	77	112	144	176	205	234	261	287	312
	1.5	95	137	178	217	253	288	322	355	386
	2.0	108	156	202	246	288	328	366	404	440
	2.5	118	171	222	270	316	361	403	444	483
DOWNHILL 2%	1.0	84	126	168	211	256	303	355	413	480
	1.5	100	149	198	246	295	347	404	465	536
	2.0	112	167	220	272	326	382	442	506	580
	2.5	122	181	238	294	351	410	473	541	617

Minimum considered pressure 0.4 bar

## MAX. LATERAL LENGTH (METER) AT DIFFERENT INLET PRESSURE AND DIFFERENT SLOPES

DRIPNET PC™ AS 12009/12010 • ID 10.6 MM • KD 2.85 • FLOW RATE 0.6 L/H

	DISTANCE BETWEEN DRIPPERS (METER)									
	INLET PRESSURE (BAR)	0.2	0.3	0.4	0.5	0.6	0.7	0.8	0.9	1.0
UPHILL 2%	1.0	55	77	97	114	130	144	155	167	176
	1.5	69	98	125	149	170	190	210	226	242
	2.0	79	113	145	174	200	225	247	269	289
	2.5	88	126	161	193	223	251	278	302	326
FLAT TERRAIN	1.0	59	86	111	135	157	179	200	221	240
	1.5	72	105	136	166	194	221	247	272	296
	2.0	82	120	155	189	221	251	282	310	338
	2.5	90	131	170	207	242	277	309	341	371
DOWNHILL 2%	1.0	63	94	125	156	186	216	248	281	315
	1.5	76	112	148	183	218	252	286	323	361
	2.0	85	126	165	204	242	279	317	356	396
	2.5	93	137	180	221	262	302	342	383	426

Minimum considered pressure 0.4 bar

## MAX. LATERAL LENGTH (METER) AT DIFFERENT INLET PRESSURE AND DIFFERENT SLOPES

DRIPNET PC™ AS 12009/12010 • ID 10.6 MM • KD 2.85 • FLOW RATE 1.0 L/H

	DISTANCE BETWEEN DRIPPERS (METER)									
	INLET PRESSURE (BAR)	0.2	0.3	0.4	0.5	0.6	0.7	0.8	0.9	1.0
UPHILL 2%	1.0	40	57	72	86	98	110	120	130	139
	1.5	50	72	92	110	127	143	158	171	184
	2.0	57	82	106	127	147	166	184	201	217
	2.5	63	91	117	141	164	185	206	225	243
FLAT TERRAIN	1.0	42	61	79	97	113	128	143	158	172
	1.5	52	75	98	119	139	158	177	195	212
	2.0	59	86	111	135	158	180	202	222	242
	2.5	64	94	122	148	173	198	222	244	266
DOWNHILL 2%	1.0	44	65	86	107	127	147	167	187	206
	1.5	53	79	103	128	151	174	197	219	241
	2.0	60	89	116	143	169	194	219	244	268
	2.5	66	97	126	155	184	211	238	264	290

Minimum considered pressure 0.4 bar

## MAX. LATERAL LENGTH (METER) AT DIFFERENT INLET PRESSURE AND DIFFERENT SLOPES

DRIPNET PC™ AS 12009/12010 • ID 10.6 MM • KD 2.85 • FLOW RATE 1.6 L/H

		DISTANCE BETWEEN DRIPPERS (METER)								
UPHILL 2%	INLET PRESSURE (BAR)	0.2	0.3	0.4	0.5	0.6	0.7	0.8	0.9	1.0
		1.0	30	43	54	65	75	84	93	101
	1.5	37	53	68	83	95	108	119	131	141
	2.0	42	61	78	95	110	125	138	152	165
	2.5	46	67	87	105	122	139	154	169	183
FLAT TERRAIN	1.0	31	45	58	71	83	95	106	116	127
	1.5	38	55	72	87	102	116	130	143	156
	2.0	43	63	81	99	116	132	148	164	178
	2.5	47	69	89	109	127	146	163	180	196
DOWNHILL 2%	1.0	32	47	62	77	91	104	118	132	145
	1.5	39	57	75	92	109	125	141	157	172
	2.0	44	64	84	104	122	140	158	175	192
	2.5	48	70	92	113	133	153	171	190	209

Minimum considered pressure 0.4 bar

## MAX. LATERAL LENGTH (METER) AT DIFFERENT INLET PRESSURE AND DIFFERENT SLOPES

DRIPNET PC™ AS 12009/12010 • ID 10.6 MM • KD 2.85 • FLOW RATE 2.0 L/H

		DISTANCE BETWEEN DRIPPERS (METER)								
UPHILL 2%	INLET PRESSURE (BAR)	0.2	0.3	0.4	0.5	0.6	0.7	0.8	0.9	1.0
		1.0	26	37	47	57	66	74	82	89
	1.5	32	46	59	72	83	95	105	114	124
	2.0	36	53	68	83	96	109	121	132	144
	2.5	40	58	75	91	106	120	134	148	160
FLAT TERRAIN	1.0	27	39	50	61	71	81	91	101	109
	1.5	33	48	62	75	88	101	113	124	135
	2.0	37	54	70	86	100	114	128	141	154
	2.5	41	59	77	94	110	126	141	156	169
DOWNHILL 2%	1.0	27	41	53	66	77	89	101	113	123
	1.5	33	49	64	79	93	107	121	134	147
	2.0	38	55	72	89	104	120	135	150	164
	2.5	41	60	79	97	114	131	147	163	179

Minimum considered pressure 0.4 bar

## MAX. LATERAL LENGTH (METER) AT DIFFERENT INLET PRESSURE AND DIFFERENT SLOPES

DRIPNET PC™ AS 12009/12010 • ID 10.6 MM • KD 2.85 • FLOW RATE 3.0 L/H

		DISTANCE BETWEEN DRIPPERS (METER)								
UPHILL 2%	INLET PRESSURE (BAR)	0.2	0.3	0.4	0.5	0.6	0.7	0.8	0.9	1.0
		1.0	20	29	37	45	52	58	64	70
	1.5	25	36	46	56	65	74	82	89	97
	2.0	28	41	52	64	74	85	94	104	112
	2.5	31	45	58	71	82	93	104	114	124
FLAT TERRAIN	1.0	20	30	38	47	55	62	70	77	84
	1.5	25	36	47	58	68	77	86	95	104
	2.0	28	41	54	66	77	88	98	108	118
	2.5	31	45	59	72	85	97	108	119	130
DOWNHILL 2%	1.0	21	31	40	50	58	67	75	84	92
	1.5	25	37	49	60	70	81	91	101	111
	2.0	29	42	55	68	79	91	102	113	124
	2.5	31	46	60	74	87	99	112	124	136

Minimum considered pressure 0.4 bar

## MAX. LATERAL LENGTH (METER) AT DIFFERENT INLET PRESSURE AND DIFFERENT SLOPES

DRIPNET PC™ 16009/16010/16012 • ID 14.2 MM • KD 0.72 • FLOW RATE 0.4 L/H

		DISTANCE BETWEEN DRIPPERS (METER)								
UPHILL 2%	INLET PRESSURE (BAR)	0.2	0.3	0.4	0.5	0.6	0.7	0.8	0.9	1.0
	1.0	137	175	202	222	237	248	257	264	269
	1.5	181	239	286	323	353	378	398	416	431
	2.0	212	285	346	396	438	474	505	532	556
	2.5	237	322	393	453	505	551	590	626	658
FLAT TERRAIN	1.0	168	237	299	356	409	460	508	554	597
	1.5	207	292	369	441	507	570	630	686	741
	2.0	236	332	421	502	578	650	718	784	846
	2.5	259	365	462	553	636	715	791	863	932
DOWNHILL 2%	1.0	201	301	402	503	604	700	788	875	960
	1.5	234	346	456	564	671	774	869	962	1054
	2.0	260	380	498	613	725	834	935	1034	1131
	2.5	281	410	534	655	772	886	992	1096	1198

Minimum considered pressure 0.4 bar

Due to lateral filling time and flushing effectiveness it is not recommended to exceed 800 meters lateral length

## MAX. LATERAL LENGTH (METER) AT DIFFERENT INLET PRESSURE AND DIFFERENT SLOPES

DRIPNET PC™ 16009/16010/16012 • ID 14.2 MM • KD 0.72 • FLOW RATE 0.6 L/H

		DISTANCE BETWEEN DRIPPERS (METER)								
UPHILL 2%	INLET PRESSURE (BAR)	0.2	0.3	0.4	0.5	0.6	0.7	0.8	0.9	1.0
	1.0	110	145	171	192	208	221	232	240	248
	1.5	143	193	234	268	297	322	343	362	378
	2.0	167	227	278	323	361	394	424	450	474
	2.5	186	255	314	366	411	452	488	521	551
FLAT TERRAIN	1.0	129	182	230	274	315	354	391	427	460
	1.5	159	224	284	339	390	438	485	528	571
	2.0	181	255	323	386	445	501	553	603	652
	2.5	198	281	355	425	490	551	609	664	718
DOWNHILL 2%	1.0	148	220	291	361	431	501	570	638	703
	1.5	175	256	335	412	487	561	635	708	777
	2.0	195	284	369	452	532	611	689	765	838
	2.5	211	306	397	485	570	652	734	814	890

Minimum considered pressure 0.4 bar

Due to lateral filling time and flushing effectiveness it is not recommended to exceed 800 meters lateral length

## MAX. LATERAL LENGTH (METER) AT DIFFERENT INLET PRESSURE AND DIFFERENT SLOPES

DRIPNET PC™ 16009/16010/16012 • ID 14.2 MM • KD 0.72 • FLOW RATE 1.0 L/H

		DISTANCE BETWEEN DRIPPERS (METER)								
UPHILL 2%	INLET PRESSURE (BAR)	0.2	0.3	0.4	0.5	0.6	0.7	0.8	0.9	1.0
	1.0	83	111	134	153	169	183	194	205	214
	1.5	106	145	178	207	232	253	274	292	308
	2.0	122	169	209	244	275	304	330	354	375
	2.5	135	188	234	274	311	344	374	403	429
FLAT TERRAIN	1.0	92	130	165	197	226	255	282	307	331
	1.5	114	161	204	243	280	315	349	381	411
	2.0	129	183	232	277	320	360	398	434	469
	2.5	142	201	255	305	352	396	438	478	517
DOWNHILL 2%	1.0	102	150	196	242	287	330	374	418	461
	1.5	122	177	230	281	331	379	426	473	520
	2.0	136	197	255	311	364	417	468	518	567
	2.5	148	214	276	336	393	449	502	555	607

Minimum considered pressure 0.4 bar

## MAX. LATERAL LENGTH (METER) AT DIFFERENT INLET PRESSURE AND DIFFERENT SLOPES

DRIPNET PC™ 16009/16010/16012 • ID 14.2 MM • KD 0.72 • FLOW RATE 1.6 L/H

		DISTANCE BETWEEN DRIPPERS (METER)								
UPHILL 2%	INLET PRESSURE (BAR)	0.2	0.3	0.4	0.5	0.6	0.7	0.8	0.9	1.0
	1.0	63	86	105	121	136	148	159	169	178
	1.5	79	110	136	159	180	199	216	231	246
	2.0	91	127	158	187	212	235	256	276	295
	2.5	101	141	176	208	237	264	289	311	333
FLAT TERRAIN	1.0	68	96	122	145	167	188	208	227	245
	1.5	84	118	150	180	207	232	258	281	304
	2.0	95	135	171	205	236	265	294	320	347
	2.5	104	148	188	225	259	292	323	353	382
DOWNHILL 2%	1.0	73	107	138	170	200	230	258	287	316
	1.5	88	127	164	200	234	267	300	332	363
	2.0	99	143	184	223	260	297	332	366	400
	2.5	108	155	199	242	282	321	358	395	431

Minimum considered pressure 0.4 bar

## MAX. LATERAL LENGTH (METER) AT DIFFERENT INLET PRESSURE AND DIFFERENT SLOPES

DRIPNET PC™ 16009/16010/16012 • ID 14.2 MM • KD 0.72 • FLOW RATE 2.0 L/H

		DISTANCE BETWEEN DRIPPERS (METER)								
	INLET PRESSURE (BAR)	0.2	0.3	0.4	0.5	0.6	0.7	0.8	0.9	1.0
	UPHILL 2%	1.0	55	75	92	108	121	133	143	153
1.5		69	96	119	140	159	176	192	206	220
2.0		79	110	138	164	186	207	226	244	261
2.5		87	122	154	182	208	232	254	275	294
3.0		94	133	167	198	226	253	278	301	322
FLAT TERRAIN	1.0	59	83	105	126	145	163	180	196	212
	1.5	72	102	130	155	179	202	223	243	263
	2.0	82	116	148	177	204	230	254	278	300
	2.5	90	128	162	195	224	253	280	306	331
	3.0	97	138	175	210	242	272	302	329	356
DOWNHILL 2%	1.0	63	91	118	144	169	194	218	242	266
	1.5	75	109	140	171	199	228	255	282	308
	2.0	85	122	157	191	223	253	283	312	340
	2.5	93	133	171	207	241	274	306	338	368
	3.0	99	143	183	221	257	293	326	359	391

Minimum considered pressure 0.4 bar

## MAX. LATERAL LENGTH (METER) AT DIFFERENT INLET PRESSURE AND DIFFERENT SLOPES

DRIPNET PC™ 16009/16010/16012 • ID 14.2 MM • KD 0.72 • FLOW RATE 3.0 L/H

		DISTANCE BETWEEN DRIPPERS (METER)								
	INLET PRESSURE (BAR)	0.2	0.3	0.4	0.5	0.6	0.7	0.8	0.9	1.0
	UPHILL 2%	1.0	43	59	73	86	97	107	117	125
1.5		53	75	94	111	126	140	153	166	177
2.0		61	86	108	128	146	163	179	194	208
2.5		67	95	120	142	163	182	200	217	233
3.0		73	103	130	154	177	198	218	237	254
FLAT TERRAIN	1.0	45	64	81	97	112	125	138	151	164
	1.5	55	79	100	120	138	155	172	187	203
	2.0	63	89	114	136	157	177	196	214	231
	2.5	69	98	125	150	173	195	215	236	255
	3.0	74	106	134	161	186	210	232	254	275
DOWNHILL 2%	1.0	47	68	88	108	126	144	162	178	195
	1.5	57	83	106	129	150	171	190	210	229
	2.0	65	93	119	144	168	190	213	234	255
	2.5	71	101	130	157	182	207	231	254	277
	3.0	76	109	139	168	196	222	247	271	295

Minimum considered pressure 0.4 bar

## MAX. LATERAL LENGTH (METER) AT DIFFERENT INLET PRESSURE AND DIFFERENT SLOPES

DRIPNET PC™ 16009/16010/16012 • ID 14.2 MM • KD 0.72 • FLOW RATE 3.8 L/H

		DISTANCE BETWEEN DRIPPERS (METER)								
	INLET PRESSURE (BAR)	0.2	0.3	0.4	0.5	0.6	0.7	0.8	0.9	1.0
	UPHILL 2%	1.0	37	51	64	75	85	95	103	111
1.5		46	65	81	96	109	122	134	145	155
2.0		53	74	93	111	127	142	156	169	182
2.5		58	82	103	123	141	158	174	189	203
3.0		63	88	112	133	153	172	189	205	221
FLAT TERRAIN	1.0	39	55	69	83	95	108	119	131	141
	1.5	47	67	86	103	118	133	147	161	174
	2.0	54	77	97	117	135	152	168	184	199
	2.5	59	84	107	128	148	167	185	203	219
	3.0	64	91	115	138	160	180	199	218	236
DOWNHILL 2%	1.0	40	58	75	91	106	121	136	150	164
	1.5	49	70	90	109	127	144	162	177	194
	2.0	55	79	102	123	143	162	181	199	216
	2.5	60	86	111	134	155	176	197	216	235
	3.0	65	93	119	143	166	189	210	231	251

Minimum considered pressure 0.4 bar

## MAX. LATERAL LENGTH (METER) AT DIFFERENT INLET PRESSURE AND DIFFERENT SLOPES

DRIPNET PC™ 20010/20012 • ID 17.5 MM • KD 0.25 • FLOW RATE 0.4 L/H

		DISTANCE BETWEEN DRIPPERS (METER)								
	INLET PRESSURE (BAR)	0.2	0.3	0.4	0.5	0.6	0.7	0.8	0.9	1.0
	UPHILL 2%	1.0	193	229	250	263	272	278	282	285
1.5		271	337	382	416	440	459	473	484	494
2.0		326	415	481	532	571	603	629	651	668
2.5		370	477	560	626	679	723	760	791	818
FLAT TERRAIN	1.0	277	380	470	553	629	701	769	833	896
	1.5	343	470	583	686	781	870	955	1036	1113
	2.0	391	536	666	783	892	995	1092	1184	1273
	2.5	430	590	733	863	983	1096	1203	1306	1403
DOWNHILL 2%	1.0	367	547	720	875	1025	1171	1314	1455	1594
	1.5	418	612	796	963	1124	1280	1434	1583	1730
	2.0	458	663	858	1035	1205	1371	1531	1688	1843
	2.5	492	707	910	1097	1276	1448	1616	1780	1940

Minimum considered pressure 0.4 bar

Due to lateral filling time and flushing effectiveness it is not recommended to exceed 800 meters lateral length



## MAX. LATERAL LENGTH (METER) AT DIFFERENT INLET PRESSURE AND DIFFERENT SLOPES

DRIPNET PC™ 20010/20012 • ID 17.5 MM • KD 0.25 • FLOW RATE 0.6 L/H

		DISTANCE BETWEEN DRIPPERS (METER)								
UPHILL 2%	INLET PRESSURE (BAR)	0.2	0.3	0.4	0.5	0.6	0.7	0.8	0.9	1.0
	1.0	162	199	223	240	252	261	268	273	277
	1.5	220	281	326	361	389	411	429	444	456
	2.0	262	340	401	450	490	524	553	578	599
	2.5	294	386	460	521	572	617	654	688	717
FLAT TERRAIN	1.0	213	292	362	426	485	540	593	643	691
	1.5	264	362	449	528	602	671	736	798	859
	2.0	300	413	512	603	688	767	842	914	982
	2.5	330	454	564	665	757	845	928	1006	1082
DOWNHILL 2%	1.0	266	392	516	638	749	854	956	1056	1154
	1.5	308	446	578	709	828	941	1050	1157	1262
	2.0	340	488	629	766	892	1012	1128	1241	1352
	2.5	367	523	672	815	947	1072	1194	1313	1429

Minimum considered pressure 0.4 bar

Due to lateral filling time and flushing effectiveness it is not recommended to exceed 800 meters lateral length

## MAX. LATERAL LENGTH (METER) AT DIFFERENT INLET PRESSURE AND DIFFERENT SLOPES

DRIPNET PC™ 20010/20012 • ID 17.5 MM • KD 0.25 • FLOW RATE 1.0 L/H

		DISTANCE BETWEEN DRIPPERS (METER)								
UPHILL 2%	INLET PRESSURE (BAR)	0.2	0.3	0.4	0.5	0.6	0.7	0.8	0.9	1.0
	1.0	126	161	185	205	219	231	241	248	255
	1.5	167	218	258	291	319	342	362	379	394
	2.0	195	258	310	353	390	423	451	476	499
	2.5	218	291	351	403	448	487	522	554	584
FLAT TERRAIN	1.0	153	210	260	307	349	389	427	464	498
	1.5	189	260	323	380	433	483	530	576	619
	2.0	215	296	368	434	495	552	606	658	708
	2.5	237	326	406	478	545	608	668	725	780
DOWNHILL 2%	1.0	180	262	340	418	494	568	643	713	777
	1.5	212	303	390	474	555	635	714	788	858
	2.0	236	335	429	518	605	689	772	850	924
	2.5	256	362	461	556	647	735	822	904	981

Minimum considered pressure 0.4 bar

Due to lateral filling time and flushing effectiveness it is not recommended to exceed 800 meters lateral length

## MAX. LATERAL LENGTH (METER) AT DIFFERENT INLET PRESSURE AND DIFFERENT SLOPES

DRIPNET PC™ 20010/20012 • ID 17.5 MM • KD 0.25 • FLOW RATE 1.6 L/H

		DISTANCE BETWEEN DRIPPERS (METER)								
UPHILL 2%	INLET PRESSURE (BAR)	0.2	0.3	0.4	0.5	0.6	0.7	0.8	0.9	1.0
	1.0	98	128	150	169	184	197	208	217	225
	1.5	127	169	203	232	256	278	298	315	330
	2.0	148	198	240	276	308	336	362	385	407
	2.5	164	221	270	312	349	383	414	442	468
FLAT TERRAIN	1.0	113	155	192	227	258	288	316	343	369
	1.5	139	192	238	281	320	357	393	426	458
	2.0	159	219	272	321	366	408	449	487	524
	2.5	174	241	299	353	403	450	494	536	577
DOWNHILL 2%	1.0	128	183	236	288	337	386	435	483	531
	1.5	152	215	275	332	387	440	493	545	595
	2.0	170	240	305	367	426	483	539	594	647
	2.5	185	260	330	396	458	519	578	635	692

Minimum considered pressure 0.4 bar

## MAX. LATERAL LENGTH (METER) AT DIFFERENT INLET PRESSURE AND DIFFERENT SLOPES

DRIPNET PC™ 20010/20012 • ID 17.5 MM • KD 0.25 • FLOW RATE 2.0 L/H

		DISTANCE BETWEEN DRIPPERS (METER)								
UPHILL 2%	INLET PRESSURE (BAR)	0.2	0.3	0.4	0.5	0.6	0.7	0.8	0.9	1.0
	1.0	87	113	135	153	167	180	191	201	209
	1.5	111	149	180	206	229	250	268	284	300
	2.0	129	174	211	244	274	300	323	345	365
	2.5	143	194	237	275	308	340	367	393	418
	3.0	155	211	258	301	338	373	405	434	462
FLAT TERRAIN	1.0	98	134	166	196	224	250	274	297	320
	1.5	120	166	206	243	277	309	340	369	397
	2.0	137	189	236	278	317	354	389	422	454
	2.5	151	208	259	306	349	390	428	465	500
	3.0	163	224	280	330	377	421	462	502	540
DOWNHILL 2%	1.0	109	155	199	242	283	324	364	403	442
	1.5	130	184	234	282	328	372	416	458	500
	2.0	145	205	260	312	362	410	457	502	547
	2.5	158	223	282	338	391	442	491	539	586
	3.0	170	238	301	360	416	469	522	572	621

Minimum considered pressure 0.4 bar

## MAX. LATERAL LENGTH (METER) AT DIFFERENT INLET PRESSURE AND DIFFERENT SLOPES

DRIPNET PC™ 20010/20012 • ID 17.5 MM • KD 0.25 • FLOW RATE 3.0 L/H

		DISTANCE BETWEEN DRIPPERS (METER)								
	INLET PRESSURE (BAR)	0.2	0.3	0.4	0.5	0.6	0.7	0.8	0.9	1.0
	UPHILL 2%	1.0	69	91	109	125	139	151	161	170
1.5		87	117	143	165	185	203	219	234	248
2.0		101	136	167	194	218	240	261	279	297
2.5		111	152	186	217	245	270	294	316	336
3.0		121	164	203	237	268	296	322	347	370
FLAT TERRAIN	1.0	75	103	128	151	172	193	211	230	247
	1.5	93	128	159	188	214	239	262	284	306
	2.0	105	146	181	214	244	273	300	326	350
	2.5	116	160	200	236	269	300	330	359	386
	3.0	125	173	215	254	290	324	356	387	417
DOWNHILL 2%	1.0	81	116	148	179	208	237	265	293	320
	1.5	98	138	175	210	244	276	307	338	368
	2.0	110	155	196	235	271	306	340	374	405
	2.5	120	169	213	255	293	331	367	402	437
	3.0	129	181	228	272	313	353	391	428	464

Minimum considered pressure 0.4 bar

## MAX. LATERAL LENGTH (METER) AT DIFFERENT INLET PRESSURE AND DIFFERENT SLOPES

DRIPNET PC™ 20010/20012 • ID 17.5 MM • KD 0.25 • FLOW RATE 3.8 L/H

		DISTANCE BETWEEN DRIPPERS (METER)								
	INLET PRESSURE (BAR)	0.2	0.3	0.4	0.5	0.6	0.7	0.8	0.9	1.0
	UPHILL 2%	1.0	60	80	96	111	123	134	144	153
1.5		75	102	125	145	163	179	194	207	220
2.0		87	118	145	169	191	210	229	246	261
2.5		96	131	162	189	213	236	257	276	295
3.0		104	142	176	206	232	258	281	302	323
FLAT TERRAIN	1.0	64	89	110	130	148	165	182	197	212
	1.5	79	110	136	161	184	205	226	245	263
	2.0	90	125	156	184	210	235	258	280	301
	2.5	99	137	171	203	231	258	284	309	332
	3.0	107	148	185	218	249	279	306	333	358
DOWNHILL 2%	1.0	69	98	124	150	174	198	221	244	266
	1.5	83	117	148	178	206	232	258	284	309
	2.0	94	132	166	199	229	259	287	315	342
	2.5	103	144	181	216	249	281	311	341	369
	3.0	110	154	194	231	266	300	332	363	393

Minimum considered pressure 0.4 bar

## MAX. LATERAL LENGTH (METER) AT DIFFERENT INLET PRESSURE AND DIFFERENT SLOPES

DRIPNET PC™ 23009 • ID 20.8 MM • KD 0.2 • FLOW RATE 0.6 L/H

		DISTANCE BETWEEN DRIPPERS (METER)								
UPHILL 2%	INLET PRESSURE (BAR)	0.2	0.3	0.4	0.5	0.6	0.7	0.8	0.9	1.0
	1.0	198	233	253	266	274	280	284	287	289
	1.5	278	345	390	423	447	465	478	490	498
	2.0	336	426	493	544	583	614	639	660	677
	2.5	381	491	575	641	695	739	775	806	832
FLAT TERRAIN	1.0	288	394	488	574	653	728	799	867	931
	1.5	356	488	605	712	811	904	993	1076	1157
	2.0	406	557	691	814	927	1034	1134	1231	1323
	2.5	446	613	761	896	1021	1139	1250	1357	1459
DOWNHILL 2%	1.0	384	575	753	916	1074	1228	1378	1527	1673
	1.5	437	641	832	1007	1176	1341	1502	1660	1815
	2.0	478	694	895	1082	1261	1434	1603	1769	1931
	2.5	513	739	950	1146	1333	1514	1690	1863	2032

Minimum considered pressure 0.4 bar

Due to lateral filling time and flushing effectiveness it is not recommended to exceed 800 meters lateral length

## MAX. LATERAL LENGTH (METER) AT DIFFERENT INLET PRESSURE AND DIFFERENT SLOPES

DRIPNET PC™ 23009 • ID 20.8 MM • KD 0.2 • FLOW RATE 1.0 L/H

		DISTANCE BETWEEN DRIPPERS (METER)								
UPHILL 2%	INLET PRESSURE (BAR)	0.2	0.3	0.4	0.5	0.6	0.7	0.8	0.9	1.0
	1.0	159	196	220	238	250	259	266	271	276
	1.5	215	275	320	355	383	405	423	438	451
	2.0	255	332	392	441	481	515	544	569	591
	2.5	286	377	449	510	560	605	642	676	706
FLAT TERRAIN	1.0	207	283	351	414	471	525	576	625	671
	1.5	255	351	435	513	584	652	715	776	834
	2.0	291	400	497	586	668	745	818	887	954
	2.5	320	440	547	645	736	820	901	977	1051
DOWNHILL 2%	1.0	256	377	496	614	724	825	923	1019	1114
	1.5	297	430	558	683	800	909	1014	1118	1220
	2.0	328	471	607	739	862	978	1090	1200	1306
	2.5	354	506	648	786	916	1037	1155	1270	1382

Minimum considered pressure 0.4 bar

Due to lateral filling time and flushing effectiveness it is not recommended to exceed 800 meters lateral length

## MAX. LATERAL LENGTH (METER) AT DIFFERENT INLET PRESSURE AND DIFFERENT SLOPES

DRIPNET PC™ 23009 • ID 20.8 MM • KD 0.2 • FLOW RATE 1.6 L/H

		DISTANCE BETWEEN DRIPPERS (METER)								
UPHILL 2%	INLET PRESSURE (BAR)	0.2	0.3	0.4	0.5	0.6	0.7	0.8	0.9	1.0
	1.0	126	160	185	204	219	230	240	248	254
	1.5	166	217	257	291	318	341	362	379	394
	2.0	195	257	309	352	389	421	450	475	498
	2.5	217	290	350	402	446	486	522	554	583
FLAT TERRAIN	1.0	152	209	260	306	348	388	426	463	497
	1.5	188	259	322	379	432	482	529	574	617
	2.0	214	295	367	433	493	551	605	656	706
	2.5	236	325	404	477	544	607	666	724	778
DOWNHILL 2%	1.0	179	260	339	416	491	566	641	710	774
	1.5	211	302	388	472	553	633	711	786	855
	2.0	234	334	427	516	602	687	769	847	921
	2.5	254	360	459	554	644	732	818	900	978

Minimum considered pressure 0.4 bar

Due to lateral filling time and flushing effectiveness it is not recommended to exceed 800 meters lateral length

## MAX. LATERAL LENGTH (METER) AT DIFFERENT INLET PRESSURE AND DIFFERENT SLOPES

DRIPNET PC™ 23009 • ID 20.8 MM • KD 0.2 • FLOW RATE 2.0 L/H

		DISTANCE BETWEEN DRIPPERS (METER)								
UPHILL 2%	INLET PRESSURE (BAR)	0.2	0.3	0.4	0.5	0.6	0.7	0.8	0.9	1.0
	1.0	112	144	168	187	202	215	226	234	241
	1.5	146	193	230	261	287	311	330	348	364
	2.0	171	227	274	314	349	379	407	431	454
	2.5	190	255	309	356	398	435	468	499	526
	3.0	207	278	339	392	439	481	519	554	587
FLAT TERRAIN	1.0	132	181	225	265	302	336	370	401	431
	1.5	163	224	278	328	374	417	458	498	535
	2.0	185	255	318	375	427	477	524	569	612
	2.5	204	281	350	413	471	526	578	627	674
	3.0	220	303	377	445	508	567	623	677	728
DOWNHILL 2%	1.0	152	219	284	348	410	470	531	591	651
	1.5	180	256	328	398	465	531	596	660	722
	2.0	200	284	362	437	509	579	647	715	780
	2.5	218	308	391	471	547	620	692	761	831
	3.0	232	328	416	500	579	656	730	804	875

Minimum considered pressure 0.4 bar

Due to lateral filling time and flushing effectiveness it is not recommended to exceed 800 meters lateral length

## MAX. LATERAL LENGTH (METER) AT DIFFERENT INLET PRESSURE AND DIFFERENT SLOPES

DRIPNET PC™ 23009 • ID 20.8 MM • KD 0.2 • FLOW RATE 3.0 L/H

		DISTANCE BETWEEN DRIPPERS (METER)								
UPHILL 2%	INLET PRESSURE (BAR)	0.2	0.3	0.4	0.5	0.6	0.7	0.8	0.9	1.0
		1.0	89	117	139	157	172	185	196	205
	1.5	115	154	185	213	236	257	276	293	308
	2.0	134	180	218	253	282	309	334	356	376
	2.5	148	201	245	284	319	351	379	406	431
	3.0	161	218	268	311	350	386	418	448	477
FLAT TERRAIN	1.0	101	139	173	204	232	259	285	309	332
	1.5	125	172	214	253	288	322	354	383	413
	2.0	142	197	244	289	329	368	404	438	472
	2.5	157	216	269	318	363	405	445	483	520
	3.0	169	233	290	343	391	437	480	522	561
DOWNHILL 2%	1.0	113	162	208	253	297	340	382	423	464
	1.5	135	191	244	294	343	389	435	480	524
	2.0	151	213	271	326	378	428	478	526	572
	2.5	165	232	294	352	407	461	513	563	613
	3.0	176	248	313	375	433	489	544	597	649

Minimum considered pressure 0.4 bar

## MAX. LATERAL LENGTH (METER) AT DIFFERENT INLET PRESSURE AND DIFFERENT SLOPES

DRIPNET PC™ 23009 • ID 20.8 MM • KD 0.2 • FLOW RATE 3.8 L/H

		DISTANCE BETWEEN DRIPPERS (METER)								
UPHILL 2%	INLET PRESSURE (BAR)	0.2	0.3	0.4	0.5	0.6	0.7	0.8	0.9	1.0
		1.0	78	103	123	140	155	167	178	187
	1.5	100	134	162	188	209	228	246	262	277
	2.0	116	156	191	221	248	272	295	315	334
	2.5	128	174	213	248	279	308	334	358	381
	3.0	139	189	232	271	305	337	367	394	420
FLAT TERRAIN	1.0	87	119	148	175	200	223	245	266	286
	1.5	107	148	184	217	248	277	304	329	355
	2.0	122	169	210	248	283	316	347	377	406
	2.5	134	185	231	273	311	348	382	416	447
	3.0	145	200	249	294	336	375	413	448	482
DOWNHILL 2%	1.0	96	136	175	212	247	282	316	350	383
	1.5	114	162	206	248	287	326	364	401	437
	2.0	129	181	230	275	319	361	402	441	480
	2.5	140	197	249	298	344	389	433	474	515
	3.0	150	211	266	318	367	414	460	504	547

Minimum considered pressure 0.4 bar